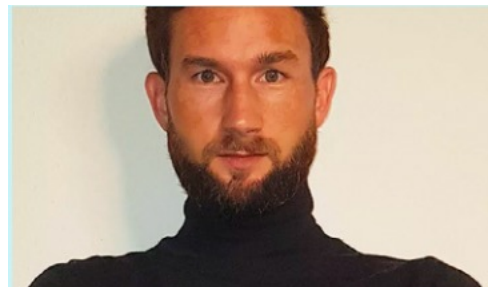


# Sign Up Today → Research and Evaluation SIG

<https://www.londonmet.ac.uk/profiles/our-staff/staff-profiles-content-store-hidden/profiles/staff/wilko-luebsen/>



Wilko Luebsen: [w.luebsen2@londonmet.ac.uk](mailto:w.luebsen2@londonmet.ac.uk) and Stuart Sims: [S.A.Sims@greenwich.ac.uk](mailto:S.A.Sims@greenwich.ac.uk)

<https://www.linkedin.com/in/wilko-luebsen-36327568/>

<https://www.linkedin.com/in/stuart-sims-94489767/>

<https://scholar.google.com/citations?user=mY4d0jUAAAAJ&hl=en>

SESSION 5.3

**RAISE** Researching, Advancing & Inspiring Student Engagement



Sign Up  
Today



# Inclusive Practice SIG

<https://www.linkedin.com/in/paddy-turner-563b91b/?originalSubdomain=uk>



Paddy Turner: [p.turner@shu.ac.uk](mailto:p.turner@shu.ac.uk)

SESSION 6.5



**RAISE** Researching, Advancing & Inspiring Student Engagement



Sign Up  
Today



# Partnership SIG

<https://www1.chester.ac.uk/departments/education-and-childrens-services/staff/wendy-garner>



Wendy Garner: [w.garner@chester.ac.uk](mailto:w.garner@chester.ac.uk)  
Peg Murphy: [p.murphy@chester.ac.uk](mailto:p.murphy@chester.ac.uk)

<https://www.raise-network.com/partnership-sig-past-events>



Philip Carey [P.Carey@ljamu.ac.uk](mailto:P.Carey@ljamu.ac.uk)

<https://www.ljamu.ac.uk/about-us/staff-profiles/faculty-of-health/nursing-and-allied-health/philip-carey>



On the 23rd November 2022, the University of Portsmouth is hosting the next Partnership SIG Event which will be focusing on "Partnership in the Professional Service".



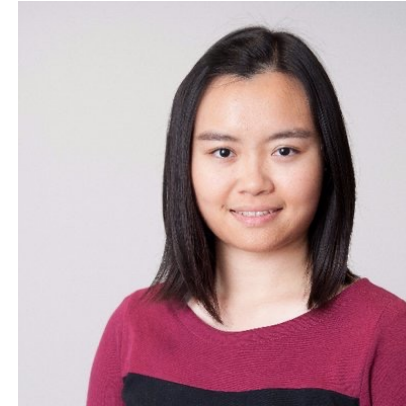


Sign Up  
Today



# Engaging Assessment SIG

SESSION 5.4



<https://sehej.raise-network.com/raise/article/view/1043>

Jagjeet Jutley-Neilson: [Jagjeet.Jutley-Neilson@warwick.ac.uk](mailto:Jagjeet.Jutley-Neilson@warwick.ac.uk) and Kiu Sum: [k.sum@my.westminster.ac.uk](mailto:k.sum@my.westminster.ac.uk)

<https://warwick.ac.uk/fac/sci/psych/people/jutleyneilson/>

[https://twitter.com/KiuSum?ref\\_src=twsrc%5Egoogle%7Ctwcamp%5Eserp%7Ctwgr%5Eauthor](https://twitter.com/KiuSum?ref_src=twsrc%5Egoogle%7Ctwcamp%5Eserp%7Ctwgr%5Eauthor)

[tps://sehej.raise-network.com/raise/article/view/Sum](https://sehej.raise-network.com/raise/article/view/Sum)



**RAISE** Researching, Advancing & Inspiring Student Engagement



Sign Up  
Today



# Early Career Researchers SIG

SESSION 6.4



Kiu Sum [k.sum@my.westminster.ac.uk](mailto:k.sum@my.westminster.ac.uk)



John Lean [j.lean@mmu.ac.uk](mailto:j.lean@mmu.ac.uk)

<https://www.linkedin.com/in/john-lean-85368a45/?originalSubdomain=uk>

<https://www.raise-network.com/early-career-researchers>

**RAISE** Researching, Advancing &  
Inspiring Student Engagement



RAISE Conference 2022  
7th-8th September  
University of Lincoln